

GypCote



Special Properties

- Super Smooth
- Extra Light-Weight
- Excellent Crack-Covering Properties



GypCote

Gypsum based finishing plasters for skimming



The World's No.1

Lighter, Smoother and Faster

GypCote is used to create a perfectly smooth and durable surface. A flawless plaster finish can simply be painted or finished with wall coverings and lit without concern for imperfections. It is for internal use only.



Product Information

GypCote Plaster

Type of Skim Coat	Thickness	Weight/Bag	Coverage	Workable time	Water requirement	Mix ratio	Quantity/Pallet
Special Fine Gypsum Plaster	0.5-5 mm.	20 kg.	20 sqm / bag based on thickness 1 mm.	180 mins	10 litres per bag	2kg/L	50 bags

Product Classification: EN 13279 type B2

Special Properties



Super smooth surface : GypCote Plaster results in a super smooth, crack free finish.



Excellent Crack-Covering Properties : GypCote can be used on concrete background at maximum thickness 5 mm. No need to wet concrete walls before application



Extra Light-Weight : Gypcote can be applied easily without leaving trowel marks and gives more coverage. (1 kg/1 m²/1 mm)

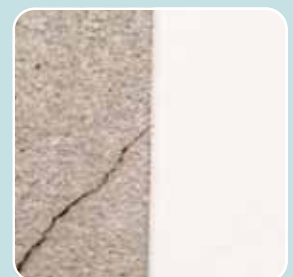
Where are they used?

Gyproc GypCote formulations provide quality skimming plasters for a comprehensive range of internal surfaces such as plasterboard, gypsum based plasters, cement renders, pre cast panels and fair faced concrete. These formulations enable GypCote plasters to be used in all construction types from high rise offices and apartments to hospitals, schools, or villas. They offer an enhanced level of surface uniformity and visual finish to walls and ceilings that are decorated with paints and dark colours, or as a base for wall paper and other decorative finishes. In areas exposed to artificial or critical light the finish provided is flawless when applied correctly.

Drying Shrinkage Comparison



Cement Plaster
Higher Drying Shrinkage 0.1%



GypCote Plaster
Lower Drying Shrinkage 0.03%

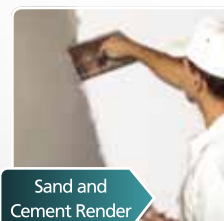
Application



Concrete Ceiling



Concrete Wall



Sand and Cement Render



Gypsum Board Lining

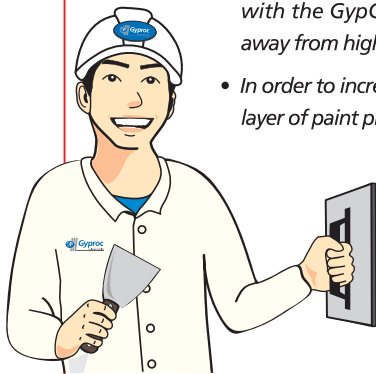
GypCote Plaster Skim-coat Gypsum

GypCote Plaster Properties

Comparison of Properties between GypCote Plaster and Ordinary Skim-coat Cement Plasters

	GypCote Plaster	Ordinary Skim-coat Cement Plasters
Quality of plaster material	Soft white, very fine grain	White/grey
Ease of mixing	Easily mixed, by hand-mixing	Not easily mixed
Drying time in bucket after mixing with water	3 hours	4 hours
Coverage area / 1 mm.	20 sq.m / 20 kg. bag	20 sq.m / 25 kg. bag
Thickness capacity	Very good (0.5-5 mm)	Usually becomes cracked at over 2 mm thick
Ease of coating	Very smooth and easy, without leaving trowel marks	Certain brands are difficult and time consuming to obtain a smooth coat
Capacity to hide wall cracks	Very good, 3 times less drying shrinkage	Not very good. The cement surface is prone to cracking
Ease sanding	Very easy after drying for 1-3 days	Difficult after drying for 1 day
Types of applications	Indoor	Both outdoor and indoor

TIPS



- In order to achieve highest coating efficiency from GypCote Plaster, clean tools and equipment well before each application. Always use clean water for mixing with the GypCote Plaster. The material should be stored under dry shelter, away from high humidity and sunlight.
- In order to increase the adhesion of wallcovering paint, it is recommended that a layer of paint primer be applied on the original plaster surface before painting.
 - In case GypCote Plaster is to be used on a painted wall, remove the original paint first, then apply Acrylic primer to increase adhesion before applying the GypCote Plaster.
 - GypCote Plaster has a soft white color and very fine grains, which help reduce usage of paint.
 - In order to get a smooth wall coating and reduce the trowel marks, use a large polishing trowel for applying, and corner trowel for working at the corners.



Mixing Method



Mix 1 bag of GypCote Plaster (20 kg) with 10 liters of clean water.



Pour GypCote Plaster into the clean water and leave for 2-3 minutes to absorb water.



Stir until well blended (the mixture should be used up within 180 minutes).

Application Procedure



Surface preparation

- Clean the surface until it is free from dust, grease, and dirt.
- Grind or chisel the seam of the plaster surface until smooth. If cracks are present, they must be repaired first.



Application

- Use a metal trowel to apply GypCote Plaster to the required thickness of 0.5-5 mm. Building up the thickness can be done by applying additional coats after the first coat is dry, (approximately 15-30 minutes).
- For a Better finish, press the metal trowel to adjust the surface plane and polish the surface until evenly smooth; or use sandpaper to smooth the surface until the required smoothness is Obtained. Only do this once the surface is completely dry; i.e., after 1-3 days.



Thai Gypsum Products Pcl.

Thai Gypsum Products Pcl. is the pioneer in the manufacture of quality gypsum board in Thailand. It is experienced in manufacturing and supplying gypsum board, gypsum plaster, galvanized steel frames and other products involved in gypsum work under the name of ProRoc for over 40 years. Thai Gypsum Product Pcl. is part of Saint-Gobain ProRoc; the No.1 in gypsum industry. The company has over 90 manufacturing bases with distribution network in 50 countries all over the world.

Factories

High quality standard product is always the main aim of the company. The company has been putting all resources to research in order to have an ongoing development of production technology. The gypsum plant of the company is regarded to be the most modern in the Asia-Pacific region which is located at Laem Chabang Industrial Estate in Chonburi province, with production capacity of 27 million standard boards per year. The factories of galvanized steel frame in Chonburi province and gypsum plaster in Bang Pa-In district, Ayuthaya province where we always aware of the quality and standard of the products. The processes start from the selection of raw materials and continue through to the final mix proportion of the product. This is a special formula based on research conducted by Saint-Gobain ProRoc group only. This final product provides convenience, value for money and a perfect result.



Saint-Gobain Company

Saint-Gobain, established in 1665, has developed and supplied superior products reflecting the requirements of customers and partners using its expertise and market information accumulated through 340 years of history. The Saint-Gobain Group has invested more than 366 million euro annually in research and development, providing all its partners with confidence in the superiority of its advanced technologies as well as continuous innovation.

As a global leader with the world's largest market share in 12 business fields, the Saint-Gobain Group has advanced into more than 64 countries around the world and achieved approximately 40 billion euro through 1,200 subsidiaries in 4 business sectors.

The 195,000 officers and staff members of Saint-Gobain Group are creating synergy effects through mutual cooperation based on its global network and providing supreme innovation and optimum solutions through the continuous exchange of ideas.

GYPSUM	No.1 worldwide
INSULATION	No.1 worldwide
EXTERIOR PRODUCTS	No.1 in US for siding No.3 in US for roofing products
BUILDING DISTRIBUTION	No.1 worldwide in tiles distribution No.1 in Europe in building materials distribution and in carpentry
FLAT GLASS	No.1 in Europe No.3 worldwide
PIPE	No.1 worldwide in cast iron pipe
INDUSTRIAL MORTARS	No.1 worldwide in wall coatings and glues for tiling

Written enquiries should be addressed to:

Thai Gypsum Products Pcl.
Gypsum Metropolitan Tower
539/2 Si Ayutthaya Road,
Ratchathewi, Bangkok 10400
Thailand
Tel: +66(02) 640-8600

Customer Service Center

Tel: +66(02) 640-8700
Fax: +66(02) 640-8770
E-mail : export.tgp@saint-gobain.com
www.gyproc.co.th