

Gyproc Plasterboard

Moisture Resistant Board



The World's No.1

Gyproc Moisture Resistant Board

Gyproc Moisture Resistant Board is a gypsum board with water repellent additives in the core, encased in a special green paper liner. The gypsum compound and papers are mixed with special substances to specially increase moisture resistance.

Highly suitable as a base for ceramic tiling and marble in intermittent moisture areas, and also for external soffits in sheltered positions.

Made from natural gypsum, Gyproc Moisture Resistant Board is manufactured with leading edge technology to meet international standards.



Technical Information

Fire Resistance

- Classified as Class O product
- Class 1 Surface Spread of Flame (BS 476 Part 7)
- Does not produce toxic fumes or hazardous substance that are harmful to health
- Provides up to 60 minutes fire resistance (BS 476 part 22) (depending on system design)

Moisture Resistance

- Extra moisture resistance property
- Bonded to water repellent paper liners
- The gypsum compound consists of silicone that reduces moisture absorption of the board
- Water absorption < 5% w/w (BS 1230 Part 1 and ASTM C473)

Workability

- Lightweight
- Quick and easy installation

Thermal Insulation

- Thermal resistance value (R) between 0.06-0.1 sq m K/W (depending on thickness)
- Low thermal convection (U) between 10-16.7 K/W (depending on thickness)

Aesthetic properties

- Highly flexible in creating the highest standards of design
- Easily decorated with paint, tiles, wallpaper etc.
- Bending radius as small as 1800 mm

Thickness	Metric	Imperial
	9 mm	3/8"
	12 mm	1/2"
	12.5 mm	
	15 mm	

Other thicknesses are available - Please contact Customer Service

Edge Type

- Square Edge (SE)
- Recessed Edge (RE)



- Nominal Sizes 1200 mm x 2400 mm
- 1220 mm x 2440 mm (4' x 8')

Other sizes are available - Please contact Customer Service.

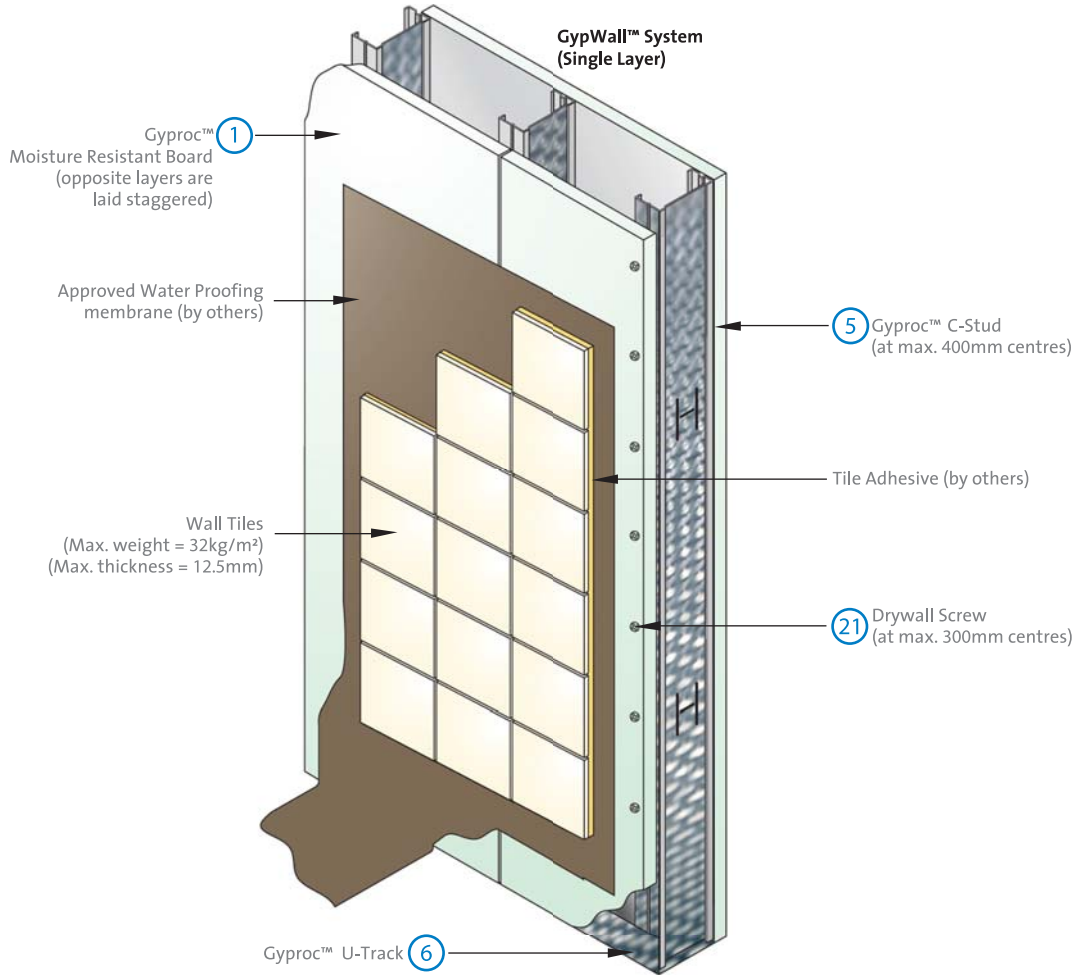
Standards

- ASTM C 1396
- ASTM D 5116
- AS/NZ S 1530.4-2005
- AS/NZ S 2588
- BS EN 520 (BS 1230 Part 1)
- BS 476 Part 4, Part 6 and Part 7
- CN S 4458
- CN S 14705
- ISO 9001
- ISO 14001
- TIS 219-2552

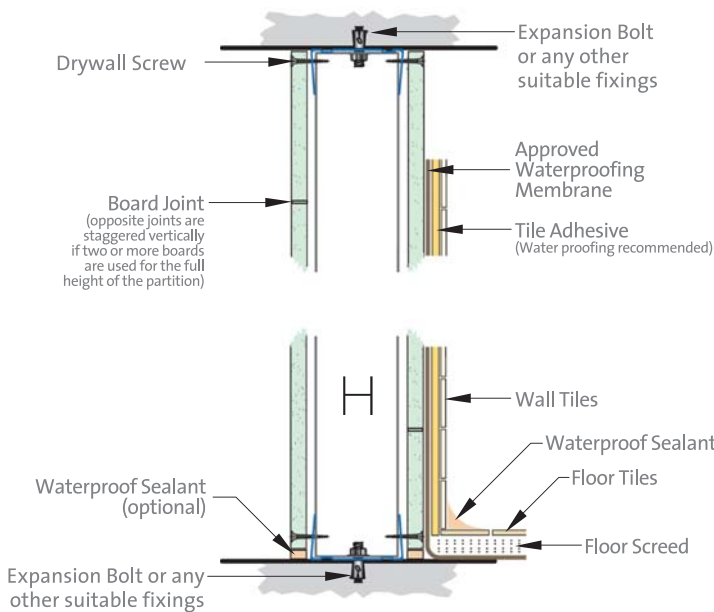


GypWall™ System Featuring Gyproc Moisture Resistant Board

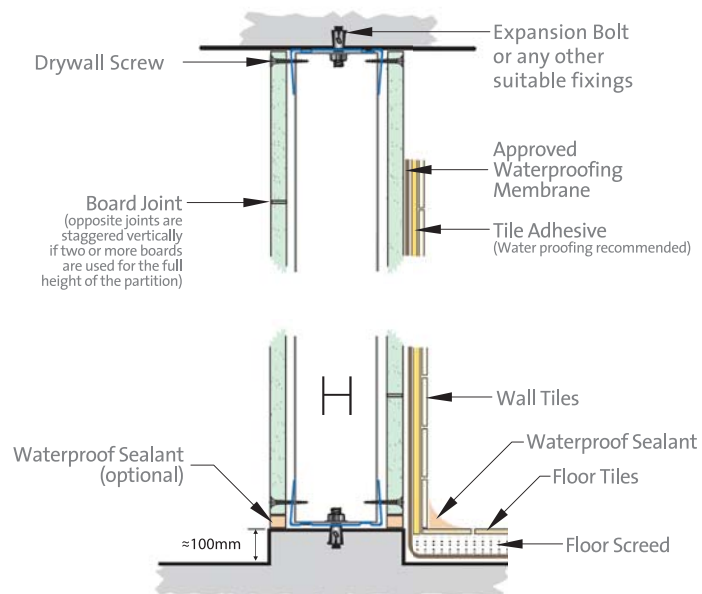
GypWall™ System featuring Gyproc Moisture Resistant Board provides extra moisture resistant properties that are ideal for wet area applications i.e. toilets, bathrooms and kitchens.

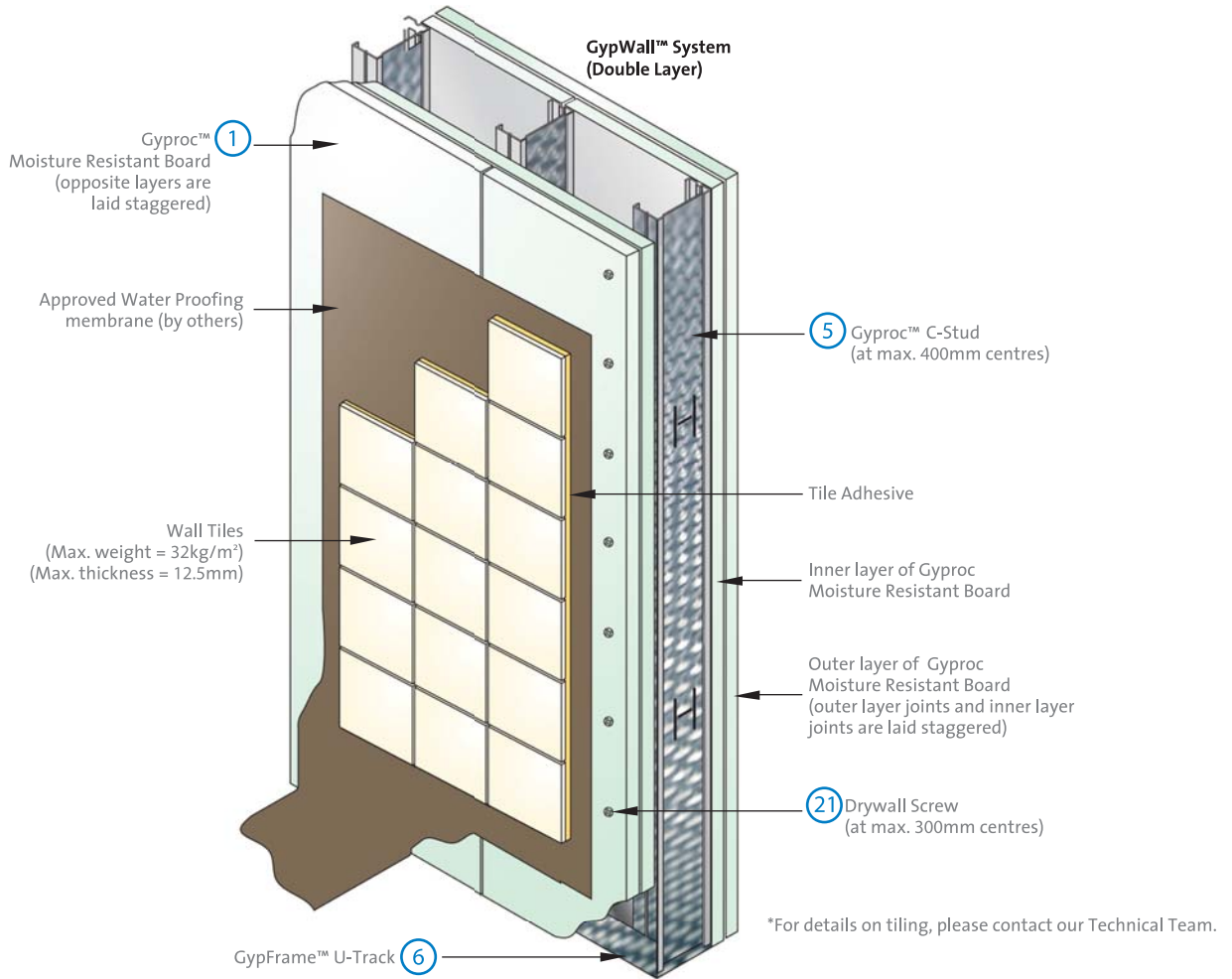


Option 1

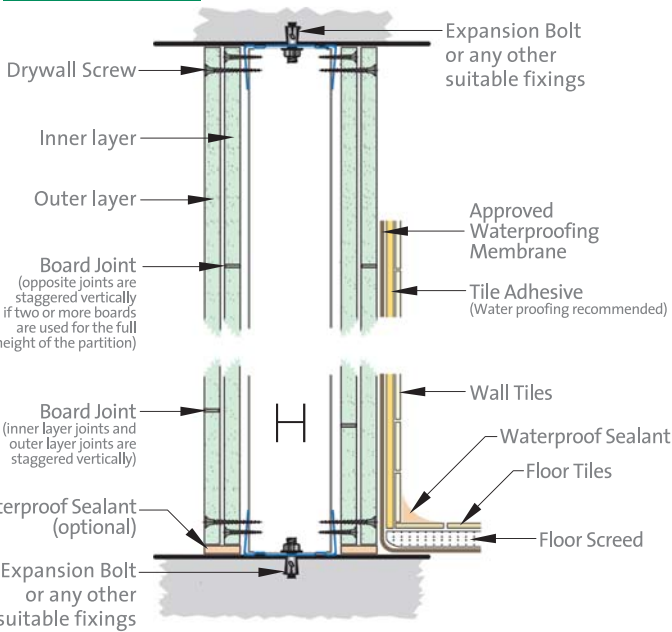


Option 2 (Kerb)

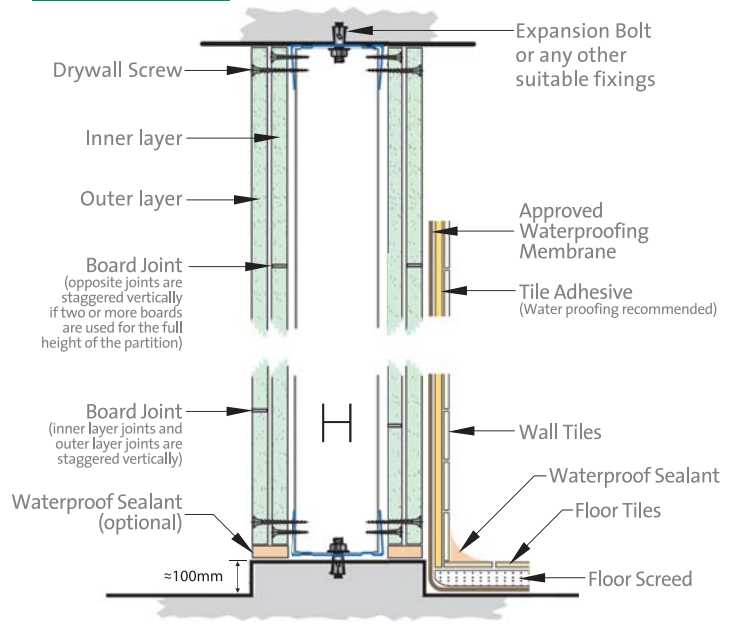




Option 1



Option 2 (Kerb)



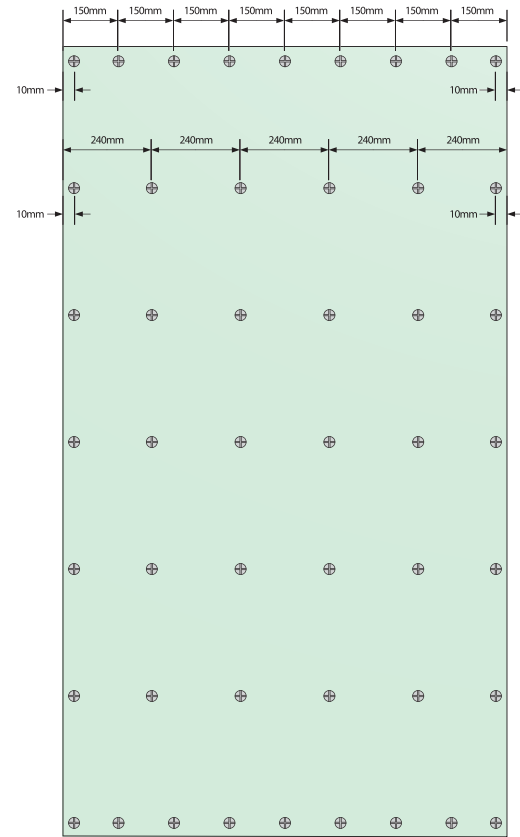
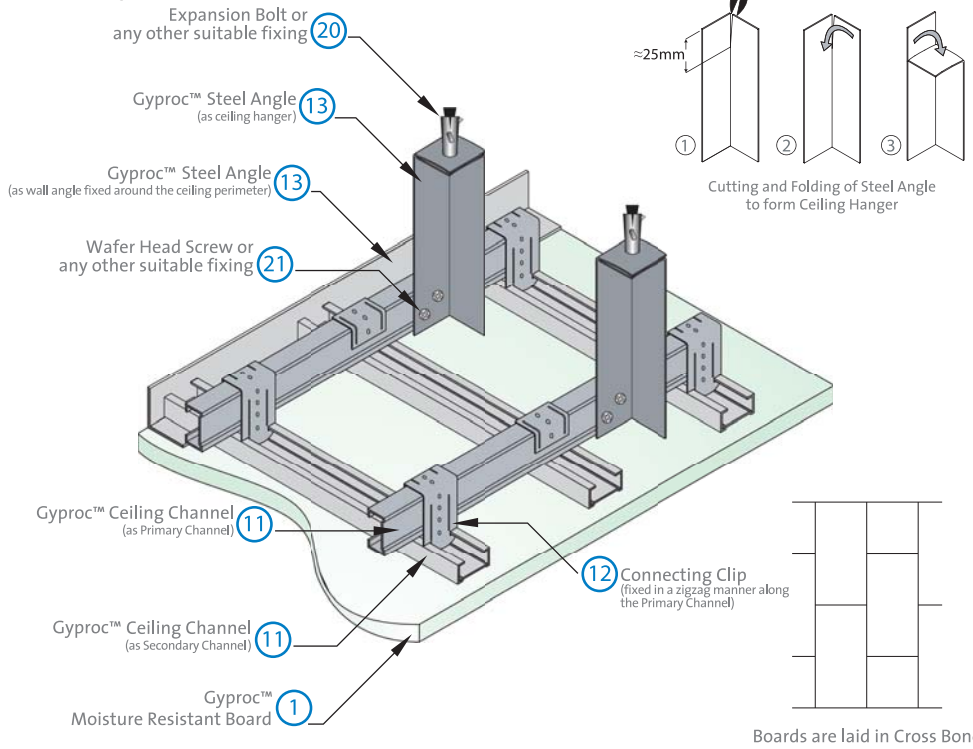
Recommended Maximum Partition Height (mm)

Gyproc™ C-Stud	Boarding each side (full boarding)			
	1 x 12.5mm	1 x 15.0mm	2 x 12.5mm	2 x 15.0mm
49S50	2500	2800	3400	3700
62S50	3200	3400	4100	4400
74S50	3600	3800	4600	4900
92S50	4500	4700	5700	5900
150S50	6200	6500	7600	7900

Gyproc Ceiling System

Gyproc™ Concealed Ceiling System Featuring Gyproc Moisture Resistant Board

The Gyproc™ Concealed Ceiling System with Gyproc Moisture Resistant Board is a concealed suspended system for wet area applications that gives a beautiful, homogeneous appearance, smooth finish without visible joints.



Components used in Gyproc Systems

Gyproc systems are built to ensure that performance is never compromised. Components used to assemble the systems are crucial and play an important role in sustaining performance. The components specified here are strongly recommended for reliable, effective and efficient systems.





Thai Gypsum Products Pcl.

Thai Gypsum Products Pcl. is the pioneer in the manufacture of quality gypsum board in Thailand. It is experienced in manufacturing and supplying gypsum board, gypsum plaster, galvanized steel frames and other products involved in gypsum work under the name of Gyproc for over 40 years. Thai Gypsum Product Pcl. is part of Saint-Gobain Gyproc ; the No.1 in gypsum industry. The company has over 90 manufacturing bases with distribution network in 50 countries all over the world.

Factories

High quality standard product is always the main aim of the company. The company has been putting all resources to research in order to have an ongoing development of production technology. The gypsum plant of the company is regarded to be the most modern in the Asia-Pacific region which is located at Laem Chabang Industrial Estate in Chonburi province, with production capacity of 27 million standard boards per year. The factories of galvanized steel frame in Chonburi province and gypsum plaster in Bang Pa-In district, Ayuthaya province where we always aware of the quality and standard of the products. The processes start from the selection of raw materials and continue through to the final mix proportion of the product. This is a special formula based on research conducted by Saint-Gobain Gyproc group only. This final product provides convenience, value for money and a perfect result.



Saint-Gobain Company

Saint-Gobain, established in 1665, has developed and supplied superior products reflecting the requirements of customers and partners using its expertise and market information accumulated through 340 years of history. The Saint-Gobain Group has invested more than 366 million euro annually in research and development, providing all its partners with confidence in the superiority of its advanced technologies as well as continuous innovation.

As a global leader with the world's largest market share in 12 business fields, the Saint-Gobain Group has advanced into more than 64 countries around the world and achieved approximately 40 billion euro through 1,200 subsidiaries in business sectors.

The 195,000 officers and staff members of Saint-Gobain Group are creating synergy effects through mutual cooperation based on its global network and providing supreme innovation and optimum solutions through the continuous exchange of ideas.

GYPSUM	No.1 worldwide
INSULATION	No.1 worldwide
EXTERIOR PRODUCTS	No.1 in US for siding No.3 in US for roofing products
BUILDING DISTRIBUTION	No.1 worldwide in tiles distribution No.1 in Europe in building materials distribution and in carpentry
FLAT GLASS	No.1 in Europe No.3 worldwide
PIPE	No.1 worldwide in cast iron pipe
INDUSTRIAL MORTARS	No.1 worldwide in wall coatings and glues for tiling

Written enquiries should be addressed to:

Thai Gypsum Products Pcl.

Gypsum Metropolitan Tower
539/2 Si Ayutthaya Road,
Ratchathewi, Bangkok 10400
Thailand
Tel: +66(02) 640-8600

Customer Service Centre

Tel: +66(02) 640-8700

Fax: +66(02) 640-8770

E-mail : export.tgp@saint-gobain.com

www.gyproc.co.th